

New Professional Body For Pharmacy: Transitional Working Group

Update for the BRM
21st May 2009



**Royal
Pharmaceutical
Society**
of Great Britain

TransCom Prospectus

- Result of a consultative and collaborative process, widely regarded as open and positive - published November 28
- Vision of a professional body that:
 - Stands for quality in a clinical profession
 - Promotes best practice
 - Provides the tools and support to enable that
 - Has pharmacists at its core
- Response - an overwhelming feeling of “positive anticipation”
- Adopted unchanged by the Society’s Council



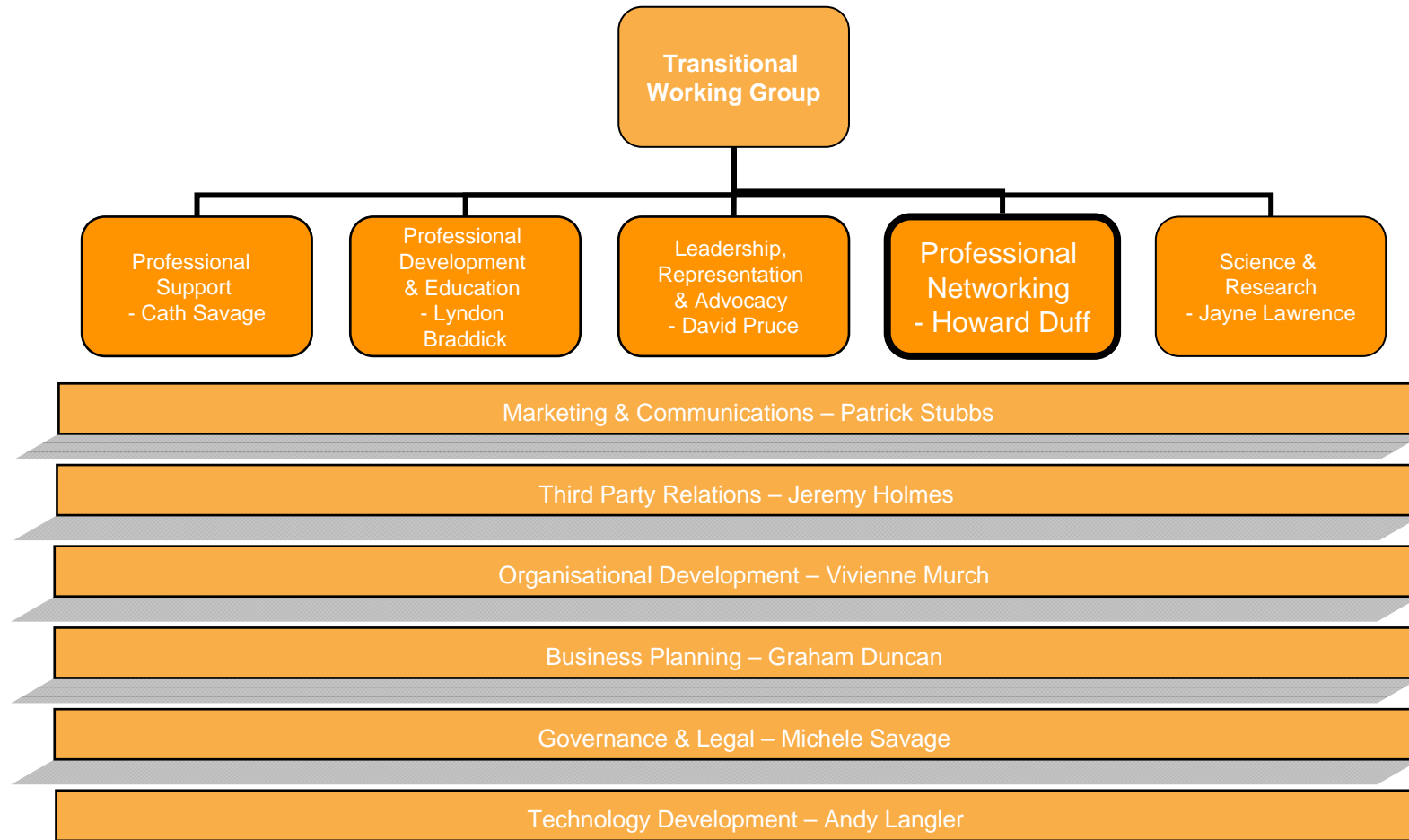
**Royal
Pharmaceutical
Society**
of Great Britain

Turning the Prospectus into Reality

- Transitional Working Group (TWG) established by Council
 - to oversee use of Society resources in enabling the transition
- Eleven TWG workstreams active
 - with outputs targeted ahead of launch of professional leadership body (PLB)
- Input from key stakeholders
 - especially on workstreams related to member services
- www.pharmacyplb.com launched
 - to encourage and manage continued engagement as part of a growing campaign of stakeholder involvement



TWG Programme Structure



**Royal
Pharmaceutical
Society
of Great Britain**

Action on the Ground

- Major stakeholder day February 24, TransCom review meeting May 13th, meetings and virtual networking with wider reference groups for workstreams
- Communications campaign agency appointed and “Commitment to Pharmacy” programme launched
- New Head of Professional Development appointed to drive CPD support
- All workstreams on track for delivery with external “sponsors” appointed and “pioneers” being recruited to test services
- Several local initiatives under way to pilot Local Practice Forums



What Next?

- Maintain stakeholder engagement and transparency
- Maintain momentum on partnership/affiliation of other bodies
- Membership vote on proposed Charter changes June/July – essential to provide the legal basis for a dedicated professional body
- Continue roll-out of new products/services – especially establishment of LPFs

